

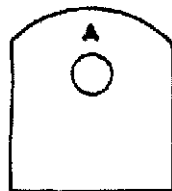
FRONT VIEW  
- HALF SIZE -

CUT LICENSE NUMERALS FROM PLAN AND CEMENT TO TOP SIDE OF RIGHT WING

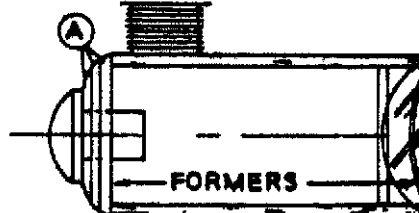
ENTIRE NOSE OF BODY IS COVERED WITH STIFF PAPER BETWEEN FORMERS A & B

CEMENT PIECES "A" TOGETHER AND SANDPAPER TO SHAPE SHOWN IN TOP & SIDE VIEWS

# NC10852



FORMERS



NO. F75

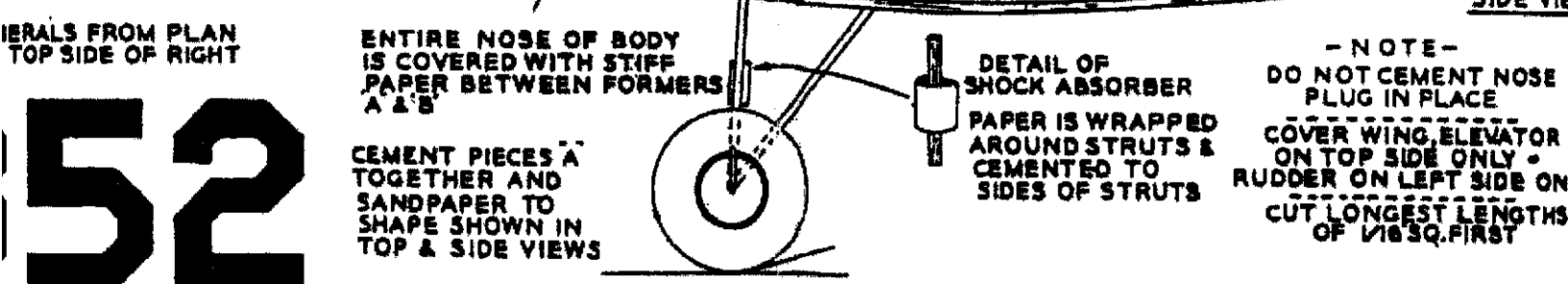
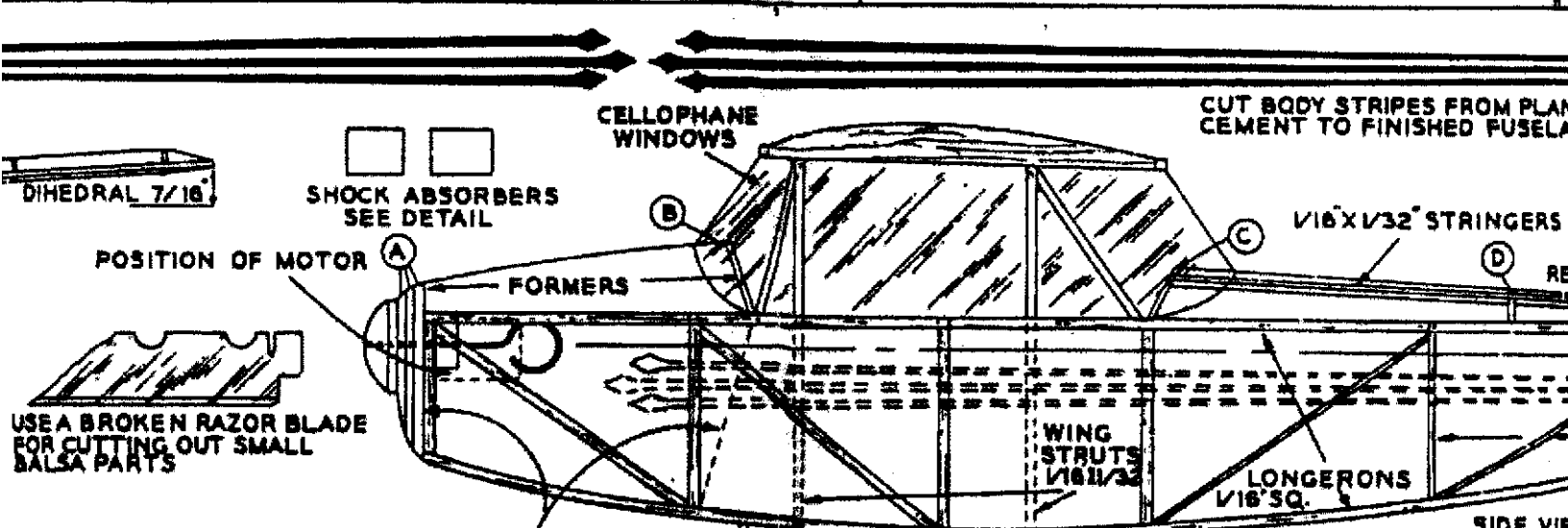
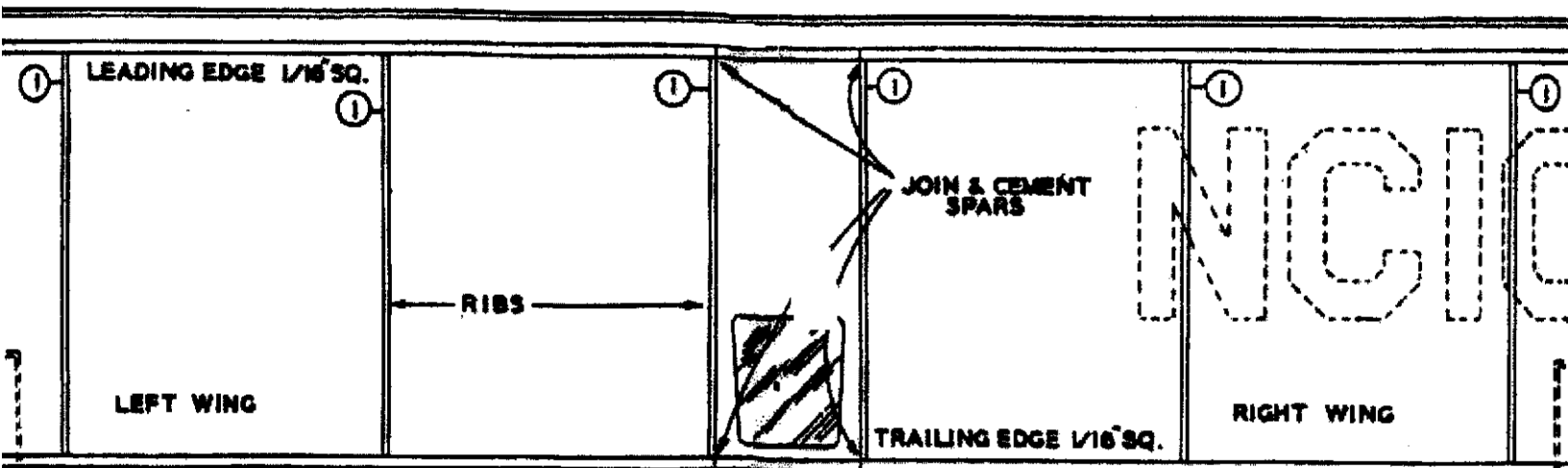


## PORTERFIELD ZEPHYR

PAUL K. GUILLOW ----- WAKEFIELD, MASS.



MOTOR PAPERS TO CONSTRUCT MOTORS CUT PAPERS "Z" FROM PLAN AND SHAPE AS SHOWN AT LEFT CEMENT PIECES "X" IN POSITION - LASTLY WIND BLACK THREAD AROUND "Z"



52

